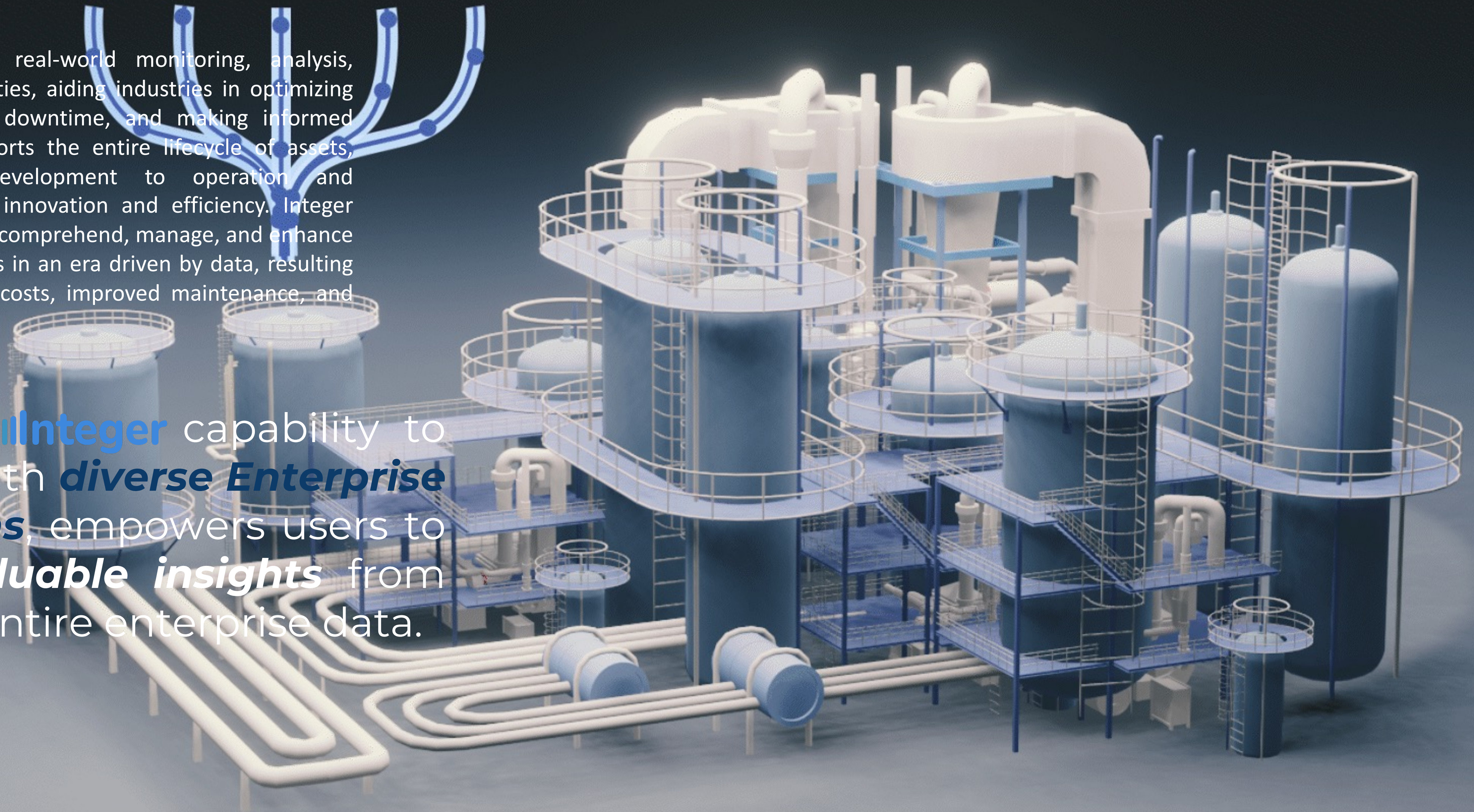


**Integer** enables real-world monitoring, analysis, and predictive capabilities, aiding industries in optimizing performance, reducing downtime, and making informed decisions. Integer supports the entire lifecycle of assets, from design and development to operation and maintenance, fostering innovation and efficiency. Integer enhance the capacity to comprehend, manage, and enhance intricate physical entities in an era driven by data, resulting in reduced operational costs, improved maintenance, and prolonged Assets life.

Leveraging **Integer** capability to integrate with **diverse Enterprise Applications**, empowers users to **glean invaluable insights** from across the entire enterprise data.



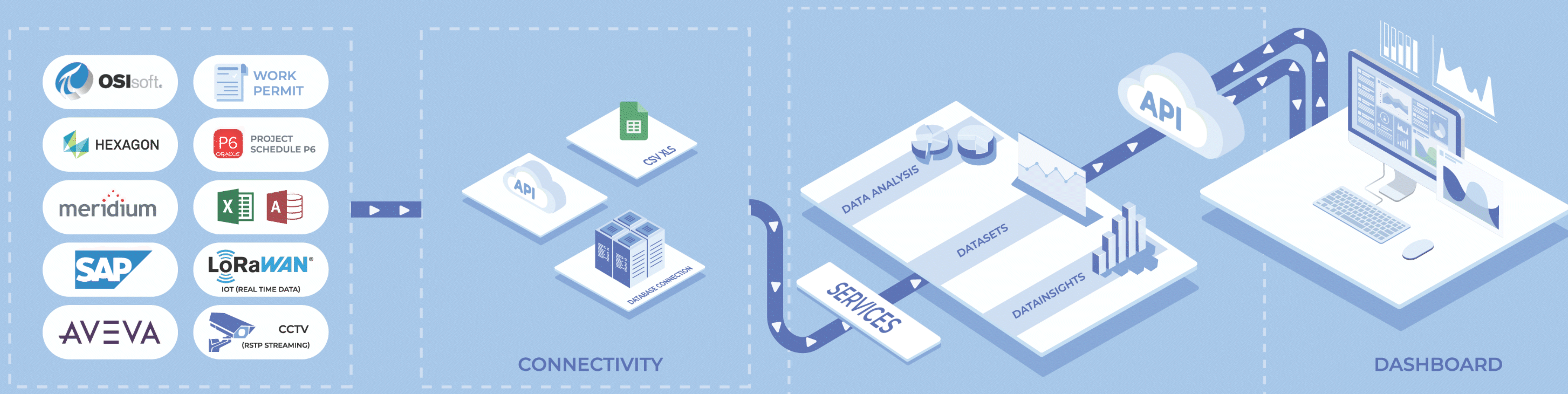
## Digital Twin Hub

Integrated system for diverse applications

Enterprise data is frequently distributed across various applications, serving diverse business processes and functions. This distribution is essential to guarantee that different segments of an organization possess the necessary data access for efficient operations and well-informed decision-making.

**Integer** multi-Data connectivity unlocks *Invaluable Enterprise Insights* using the unique capability to seamlessly integrate with multiple Applications and Data sources

- ✓ Information and Data Management
- ✓ Oracle, SQL Server, PostgreSQL, More
- ✓ Offshore and Onshore application
- ✓ More...

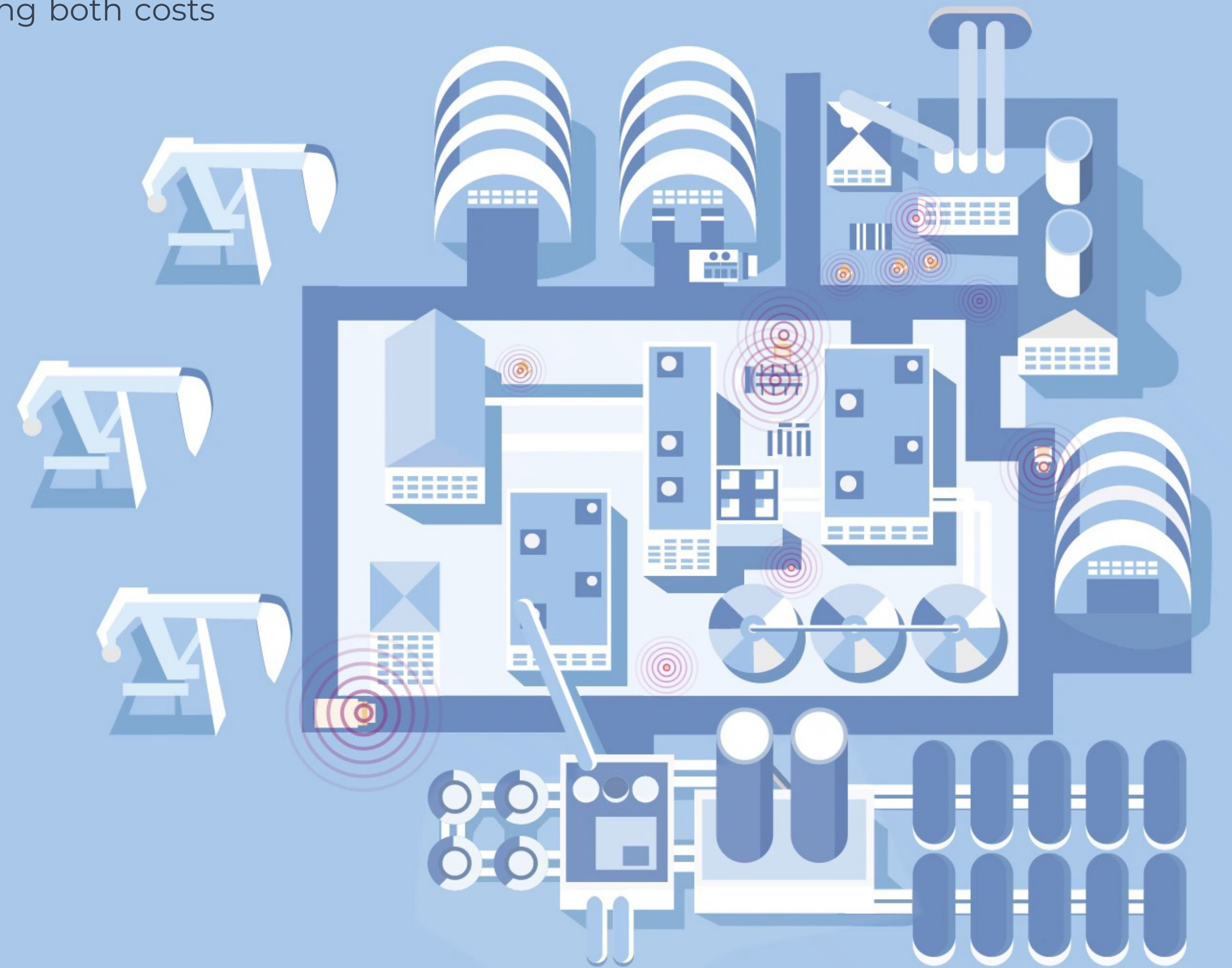


## Site Monitoring Solution

Integrated SMS

Monitoring construction site or operational plant is of paramount importance for any organization. This practice serves to prevent incidents, deter trespassing, and ultimately, to optimize Project / Operational efficiency by saving both costs and time.

**Integer** Site Monitoring Solution includes integrated IoT and CCTV capabilities with intelligent *alert systems and notifications*. This robust feature set ensures that organizations receive the essential analytical and visual data necessary for informed decision-making and streamlined operations.



# Business Analytics

Smarter decision-making powered by business analytics

Gain insights into your past, present, and future performance. **Integer** allows you to seamlessly gather key indicators, such as **KPIs**, from various systems, whether it's within one team or across your entire organization. Unlock the full potential of your data, providing you with a comprehensive view of your organization's performance and helping you chart a course towards a brighter future



## Dive-in Data Lake

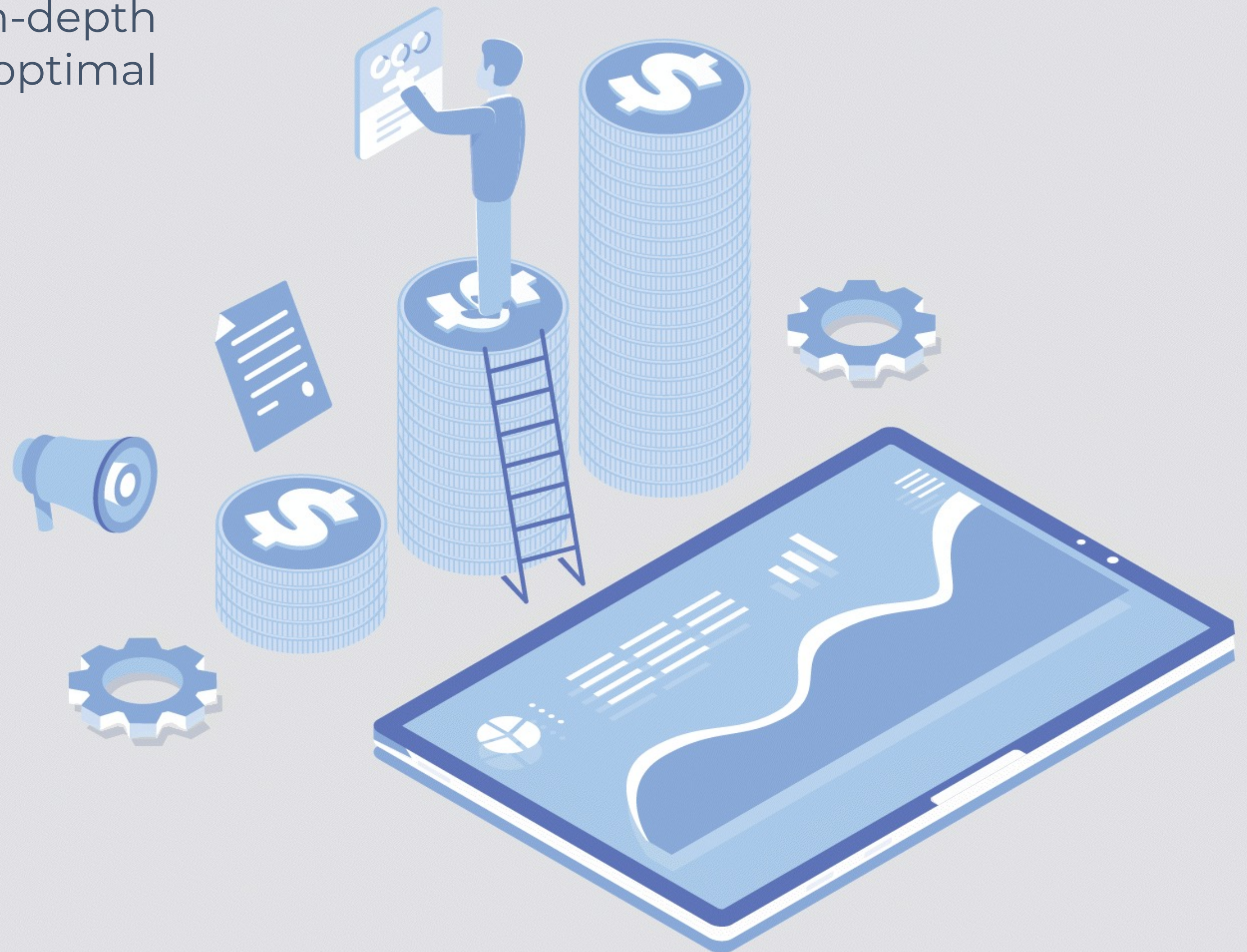
Explore, Analyze, and Extract Insights for your **structured** and unstructured data

In the world of **data**, the pursuit of in-depth **analysis** is the key for **unlocking** optimal solution and driving **business-growth**.

### Explore, Analyze, and Extract Insights

Immersing oneself in a data lake represents a strategic endeavour that harnesses the potential of a scalable, adaptable, and multifaceted data storage platform. This pursuit aims to extract invaluable insights and knowledge from a wide spectrum of data sources. The process encompasses meticulous data exploration, rigorous validation, comprehensive analysis, and robust governance protocols, all designed to facilitate data-driven decision-making.

- ✓ Data Validation Analysis
- 📄 Data Comparison Analysis
- 📊 Data Insights
- 🕒 Reports Polling, Caching



## Secured

**Integer** is built with security at its core. We employ state-of-the-art encryption methods to safeguard user data, ensuring that sensitive information remains confidential. User authentication is robust and multi-layered, making unauthorized access virtually impossible. Additionally, our compliance with industry-standard security certifications underscores our unwavering commitment to providing a secure environment for our users.

- OAuth 2.0 for Authorization.
- DES Encryption for password information.
- Read-only access for Database.
- Only GET requests
- Protection against SQL Injection attacks



## A 3D isometric illustration on a dark blue background. The scene contains various business-related icons: a line graph with five peaks, a donut chart with three segments, three cylinders of different heights, a pie chart with five slices, two gears, a document with lines of text, a stack of three coins with dollar signs, a single coin with a heart, a coin with an 'i', a bill with a heart, a bill with a dollar sign, a hand pointing at a bar chart, and an hourglass. White lines connect several of these elements, forming a network. In the bottom right corner, the word 'PROCESS' is written in a white, sans-serif font inside a light blue rectangular box.

An inherently scalable application demonstrates the capability to effectively manage a substantial volume of requests per minute. Achieving this scalability is significantly enhanced by the integration of the Console in conjunction with Docker™ and Kubernetes™, which collectively contribute to its remarkable scalability.

## Customizable

Customization, in the context of technology and user interfaces, indeed has the potential to enhance the ability of [perception](#) in several ways. When users can tailor their digital experiences to their preferences and needs, it can lead to [improved understanding](#), engagement, and overall perception.

Our feature-rich customization capability empowers users to finely calibrate the tool's functionality, interface, and settings to align seamlessly with their [unique preferences](#), needs, and objectives.

- ✓ Tailored Content, Personalized UI
- ✓ Filtering and Search



## Collaborative

Our tool offers robust collaboration capabilities, enabling seamless teamwork and knowledge sharing among users. It fosters enhanced communication, **coordination**, and collective **productivity** within various collaborative work environments.

- ✓ Real-Time Communication
- ✓ Dashboard and Report Sharing



# THANK YOU!

## Integer

*Dualroots*  
Development is Life

